



Colorado Convention Center  
("CCC")  
Four Seasons Ballroom

Rocky Mountain AVX  
October 3-4, 2024

**ALL EXHIBITORS MUST READ!**

In order to ensure the safety, security and efficiency of loading in your exhibit, please read the following guidelines. If you have questions, please contact Expomasters.

**DOCK ACCESS FOR MOVE IN:**

The following explains the exhibitor move-in dock process for Rocky Mountain AVX:

- Exhibitor move-in begins on Wednesday 10/2 @ 10:00am and Freeman will assist all exhibitors in bringing in any boxes and or items that cannot be "hand-carried by one person". In accordance with the Local 7, IATSE union jurisdiction, an exhibitor may not use any type of material handling equipment to move in exhibitor items. If material handling equipment is necessary, the exhibitor must make arrangements through Freeman. See the Labor Jurisdictions page in your FreemanOnline portal for more information on hand-carry items.
- Exhibitor vehicles will be allowed access to the dock at 10:00am.
- The "staging" of vehicles in the driveways and/or street is only allowed during exhibitor move-in time. Do not try to bring your vehicle to the dock area before 10:00am.

BOX TRUCKS will not be permitted to drive into the CCC and will be unloaded on the docks by Freeman.

Freeman will have personnel available to unload vehicles and this will be on a first come first serve basis. Freeman will unload exhibitors based on the order they check-in. You may not check-in for loading service unless your booth is completely ready to be unloaded

The Freeman Service Desk will be located the Four Seasons Ballroom.

## **PARKING:**

The CCC has a 1,000-space parking garage as shown in the map. Affordable competitive rates are available. You may also refer to <http://denverconvention.com/attend-an-event/parking/> for current rates and a downtown parking map.

Cars and/or trucks parked in marked fire lanes or in posted "no parking" areas will be ticketed and towed. Personally owned vehicles are not allowed to be permanently parked on the docks. They are allowed for purposes of unloading and loading.

## **DIRECTIONS:**

From West Colfax proceed east to Welton Street. Turn left on Welton Street. Turn Left into CCC Entrance. *\*For larger trucks,* proceed to 13<sup>th</sup> street. Turn right on 13<sup>th</sup> street to Glenarm. Turn right on Glenarm. Turn right on 12<sup>th</sup> street straight into CCC.

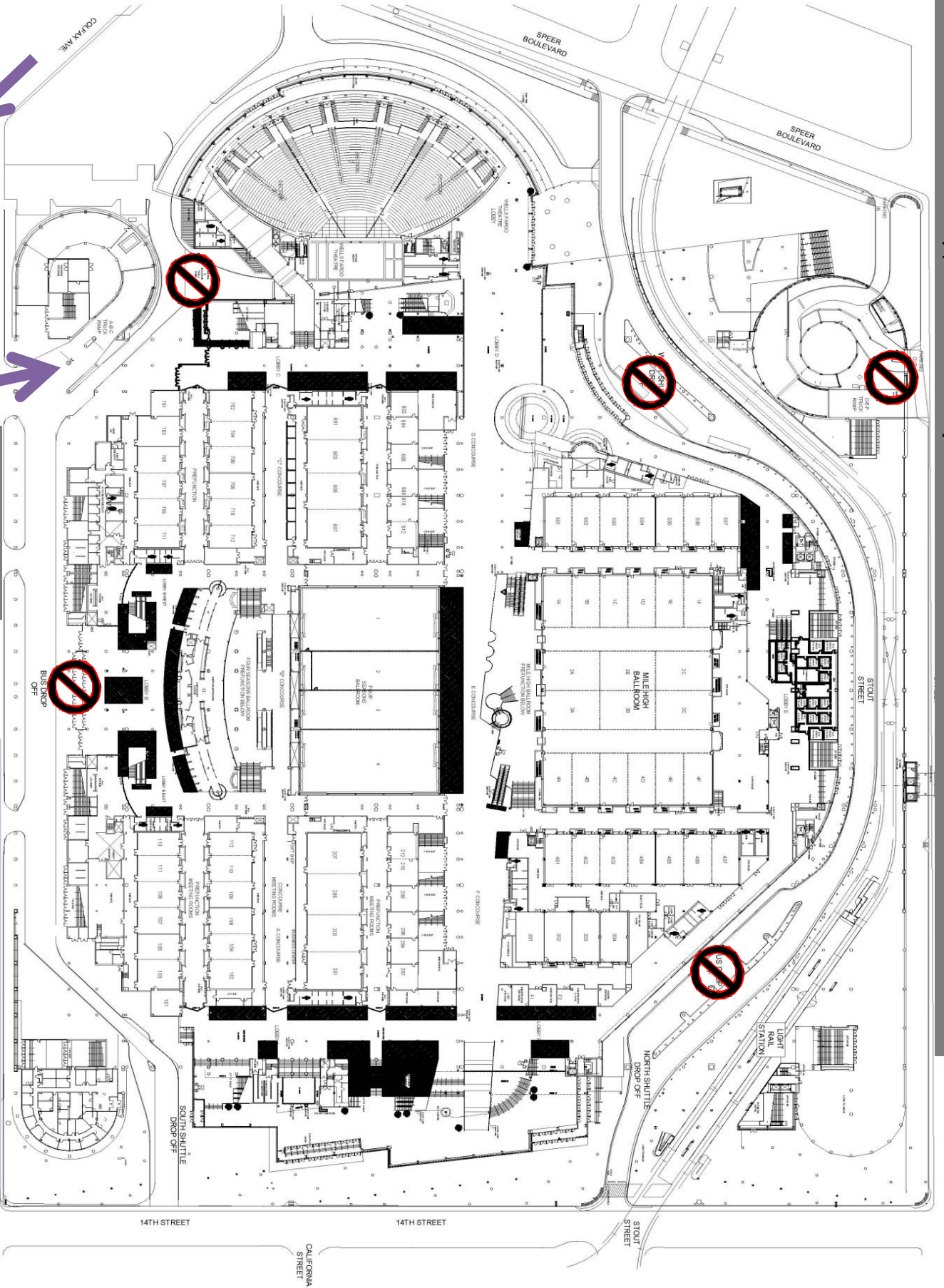
From East Colfax proceed east on Colfax to 12<sup>th</sup> street. Turn right straight into CCC.

## **MAPS:**

Maps providing directions for your move-in area are shown below.

# Colfax Avenue

No Unloading At Champa or Lower Level Dock Locations



Enter Here  
for Load-In

Upper Docks 17 & 18 Load-In  
Utilizing Freight Elevator or Elevator F

14TH STREET

14TH STREET

STOUT STREET

CALIFORNIA STREET

WELTON STREET

BUS DROP OFF

SOUTH SHUTTLE DROP OFF

NORTH SHUTTLE DROP OFF

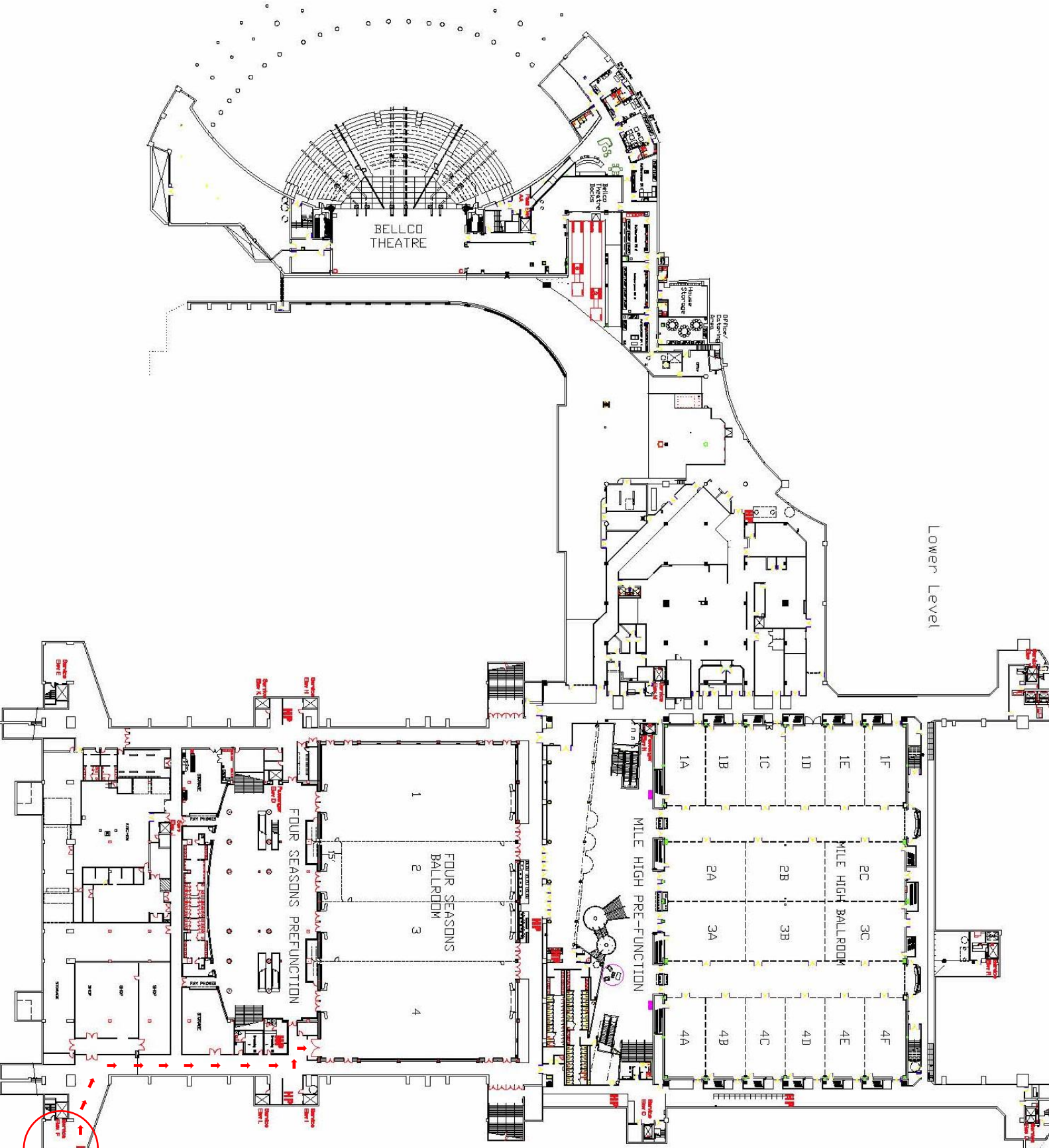
LIGHT RAIL STATION

SPEER BOULEVARD

SPEER BOULEVARD

COLFAX AVE.





Lower Level

BELCO THEATRE

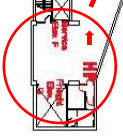
FOUR SEASONS BALLROOM

FOUR SEASONS PRE-FUNCTION

MILE HIGH PRE-FUNCTION

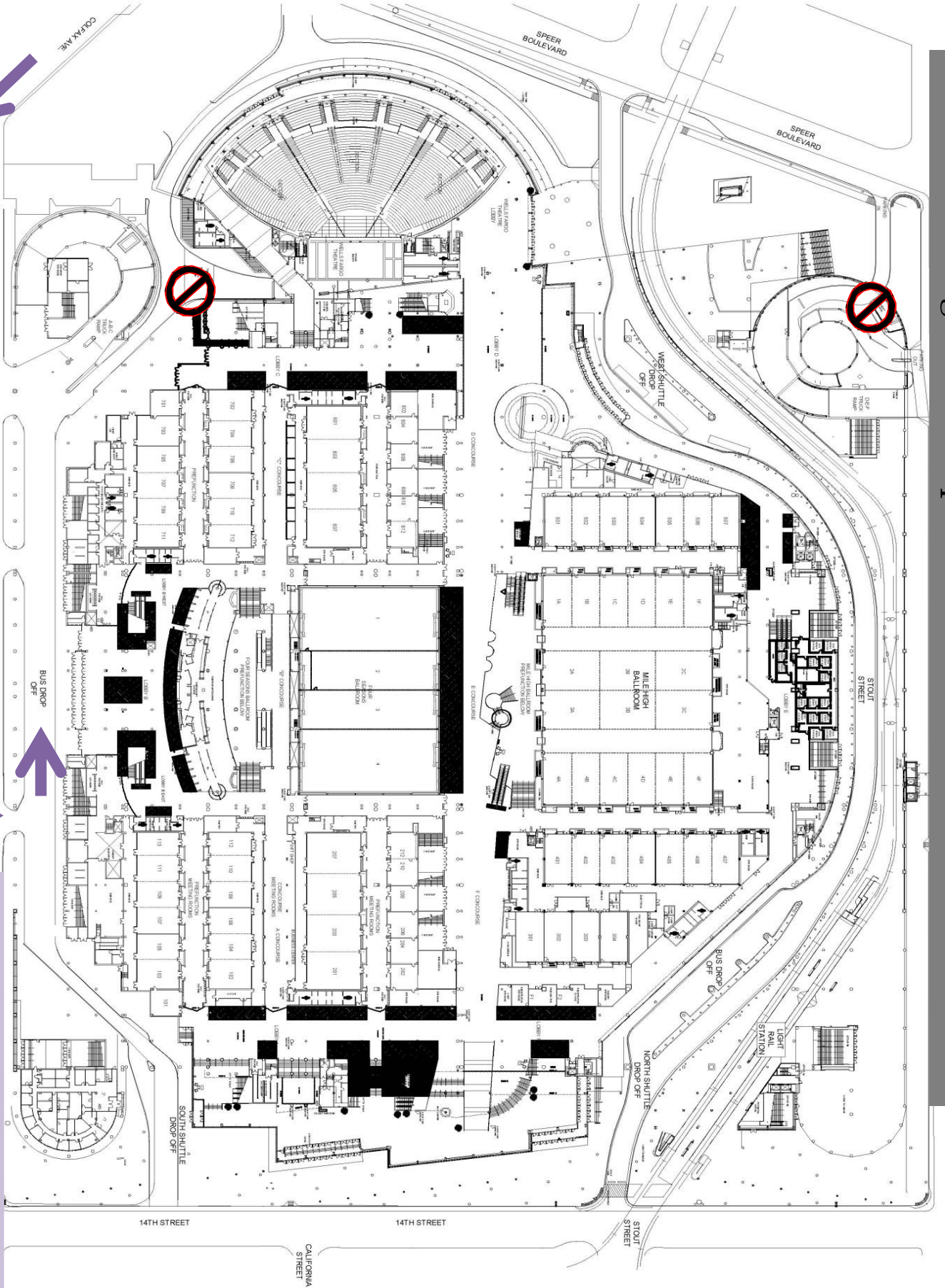
MILE HIGH BALLROOM

**If using Freight Elevator or Elevator F**  
 Once inside CCC, exhibitors can use the following path from upper docks to



# Colfax Avenue

No Unloading At Champa or Lower Level Dock Locations



Welton Street/Lobby B  
Load-In